

# Post-16 Courses 2024



Queen Elizabeth's *School*

# Contents

<b>3</b>	- Welcome	<b>29</b>	- Open Mornings
<b>4</b>	- How to choose your Post-16 courses		
<b>5</b>	- Entry Requirements - Courses	<b>30</b>	- Design and Technology
<b>6</b>	- Reporting Assessment and Target Setting - Reasons to Study at QE	<b>32</b>	- Computer Science
<b>7</b>	- Wider Post-16 Curriculum - Post-16 Tutors	<b>33</b>	- French
<b>8</b>	- How to Apply - Open Days - 16-19 Bursary Fund	<b>34</b>	- English Literature
<b>9</b>	- Extended Project Qualification	<b>35</b>	- Level 3 Applied Certificate/Diploma in Criminology
<b>10</b>	- Maths	<b>36</b>	- Law
<b>11</b>	- Further Maths	<b>37</b>	- Business
<b>12</b>	- Biology	<b>38</b>	- Geography
<b>14</b>	- Chemistry	<b>39</b>	- History
<b>16</b>	- Physics	<b>40</b>	- Philosophy and Ethics
<b>17</b>	- Psychology	<b>41</b>	- Sociology
<b>18</b>	- Art	<b>42</b>	- Health and Social Care
<b>20</b>	- Dance	<b>43</b>	- Physical Education
<b>22</b>	- Drama and Theatre	<b>44</b>	- BTEC Sport and Outdoor Activities
<b>24</b>	- Music	<b>45</b>	- BTEC Level 3 National Diploma in Sport and Outdoor Activities
<b>26</b>	- Music BTEC	<b>46</b>	- BTEC Level 3 <b>Extended</b> National Diploma in Sport and Outdoor Activities
<b>28</b>	- Photography	<b>48</b>	- Contact Details

# Welcome!

## Post-16 at Queen Elizabeth's *School*



Queen Elizabeth's School has a long-standing reputation for excellence in its vibrant Sixth Form, which is set within the historic College House, separate from the main body of the school. The Sixth Form is a learning environment that fosters and encourages young people to become creative and technical intellectuals, equipped with the skills needed to thrive at undergraduate level and in employment. We therefore provide a crucial stepping-stone to adult life and our students are supported throughout these years of transition, leaving us as confident young adults ready to take on the challenges of the modern world.

With over 150 students, we are able to offer individual study programmes that can be tailored to each student's needs. We have high expectations of our students, but support and guidance is always there in the form of small tutor groups, full time study support in our Study Plus room and dedicated school counsellors. During their 2022 visit, Ofsted commented on how:

“ The Sixth Form is well regarded by students and parents alike. Students play an active part in furthering the school's ethos of respect and tolerance. Students, are well prepared for their next steps, whether that be in securing a place at a university or further education college, or taking up an apprenticeship. ”

QE Sixth Form is not only based in a separate area from the rest of the school, but there are many privileges, which set the Sixth Form aside from the rest of the school. Students have their own areas in College House, including two comfortable social areas, numerous quiet study rooms, a fully equipped computer room and access to laptops and the library. The Sixth Form students are very much looked up to by the younger members of the school and many of our Sixth Form students in the past have acted as Peer Mentors to support some of the younger students both academically and pastorally. We have a full range of extra-curricular

activities that our students take part in as part of the QE Sixth Form Diploma Award, recognising the students' work in the areas of creativity, action and service and our Aspire programme provides our students with the academic stretch and challenge needed to be successful when applying to competitive Universities and courses.

Our results are consistently good, which, for many years, has seen QE Sixth Form rated amongst the best Post-16 providers in the South West. This is based on the progress made by students, which is directly related to the outstanding teaching students received in Sixth Form; we are really proud of the progress made by all of our students and endeavour to improve wherever we can.

If you're still unsure as to whether Sixth Form is for you, consider the following:

- Staying on at school improves your chances of getting good qualifications, especially in a Sixth Form with as much support as you get at QE.
- The better your qualifications, the more employment or university/college options you have. Getting a Level 3 qualification is the best way of getting into university or college. On average people in the UK earn up to £400,000 more over their lifetime if they have a degree, than if they don't.
- Sixth Form study is enjoyable because you have chosen the courses that are right for you.

Sixth Form is an exciting and challenging time in any young person's life, and at QE we aim to enable all of our students to build on their personal qualities and prepare them for the wider world during their two years with us. We look forward to welcoming you to the Sixth Form and being a part of your journey into adulthood.

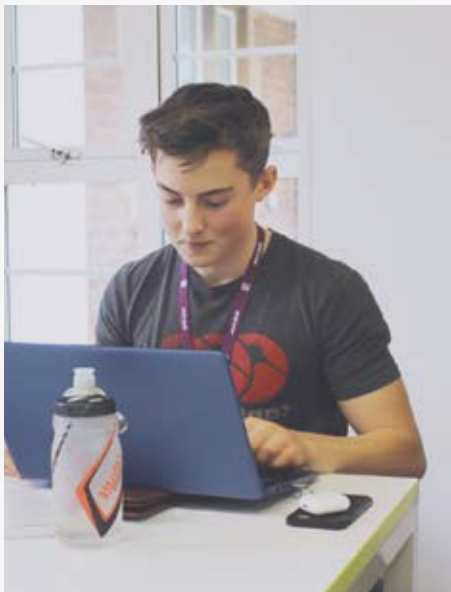
**Vicky Evans**

Head of Sixth Form



# How to choose your Post-16 Courses

Making decisions about your future is never easy and it becomes even more difficult at this stage in your life when there are so many subjects and qualifications to choose from. It is essential that your Post-16 decision is well-informed, therefore we strongly urge you to take guidance from your tutor, your teachers, your family and the independent in-school careers adviser.



In arriving at your decision, you need to think very seriously about the following guidelines:

## What do you enjoy?

Obviously you will consider the subjects you have enjoyed at GCSE but you should also consider what it is about those subjects that you have enjoyed and whether a new subject would give you the chance to develop this further. For example, do you enjoy debate and discussing? Do you enjoy finding out how the world works?

## What are you good at?

You probably have a fair idea about this based on your GCSE tests and mock exams. But, if you're not sure whether you are good at a subject, ask your teacher!

## What do you need for your future study or work?

Some courses at universities and colleges have specific requirements for the A Levels that you need for example medicine and architecture. Most, however, are simply interested in the grades you achieve, your other skills and potential further study. For more detailed information on this, see the UCAS website ([www.ucas.com](http://www.ucas.com)) or speak to your school careers advisor.

# Entry Requirements

All students must have gained a minimum of **five grades 9-4 at GCSE** to gain entry onto Level 3 courses, which should include English and Maths at GCSE. Some subjects have specific requirements based on GCSE grades in order to have a good chance of success:

Subject	Entry Requirements
Maths	GCSE 7 or equivalent in Maths
English	GCSE 5 or equivalent in English
Science	GCSE Combined Science 6-6 or GCSE in chosen Science, 6 in a second Science and GCSE Maths 6

# Courses

## A Levels

We offer a range of A Levels, which are focused on academic subjects and are all linear qualifications. The standard A Level programme at QE involves studying three A Levels in Years 12 and 13, and many also choose to take the **Extended Project Qualification**, which is the equivalent of half an A Level (please see below for more information. Some subjects also offer AS Levels however these are now stand-alone qualifications and no longer count towards the final A Level grade.

## Extended Project Qualification (EPQ)

All students have the opportunity to complete an Extended Project, which they will start in Year 12 and complete before their A level exams begin in Year 13. This offers a free choice of project that students can explore in depth. It can derive from an aspect of a subject being studied or a unit in which the students have a personal interest. This qualification is equivalent to an AS level. More importantly, it will show universities that students have personal motivation, independent research and study skills and improved personal learning and thinking skills (more information is available on the Wider Curriculum page).

## BTEC Level 3 (Subsidiary Diploma)

**BTEC Subsidiary Diplomas** are vocationally-focused qualifications, which are equivalent to A Levels and also allow progression to university. The assessment is continuous and project-based with a smaller percentage of marks gained through exams than is the case for A Level qualifications.

## GCSE Retakes

Students who do not have a GCSE grade 9-4 in English or Maths will be required to retake the GCSE alongside their A Level/BTEC courses. While a 4 equates to a low pass at GCSE, most employers and universities require at least a 5 in these.

# Reporting Assessment and Target Setting

We pride ourselves on our supportive student-tutor-teacher links, and as such we place a large emphasis on our commitment to communication between school and home. At the beginning of Year 12 we hold a Meet the Tutor evening in order to create that home-school link at the start of the Sixth Form. The tutor is the first point of contact with QE, so a good working relationship, established early on, is vital.

Students in the Sixth Form are given aspirational target grades and progress towards these are closely monitored by their subject teachers. Students will receive three progress reports each year, and we hold a Sixth Form Parents' Evening in February for parents and carers to make individual appointments with each subject teacher.

Year 12 students sit mock exams in all of their subjects in June, and following this, we invite parents and carers to come along to our Year 12 Coffee Morning in early July. This is a chance to sit down with their tutor, discuss your overall progress and make some SMART targets for improvement.

Alongside these specific dates, we monitor all students' progress very closely at QE and, should there be any cause for concern, we won't hesitate to investigate. Equally, we welcome communication from parents and carers if there are any welfare or progress concerns arising.



## Reasons to Study at Queen Elizabeth's *School*



- A long-standing reputation for excellence.
- A strong and experienced team of tutors.
- High expectations of all students, underpinned by excellent teaching staff.
- A learning environment that fosters and encourages creative minds.
- Continual monitoring and reporting of students' progress.
- Support and guidance through small teaching groups.
- A personalised approach to learning and bespoke timetables tailored to the individual's needs.
- UCAS and job application guidance through tutors and assemblies.
- The Diploma Award, which enables students to reflect upon and celebrate their achievements.
- A wide range of enrichment opportunities.
- The Aspire programme to support and inspire students aiming at Oxbridge or Russell Group universities.
- A friendly and relaxed environment with a dedicated Sixth Form Office, which is open daily.
- A broad and varied curriculum offering a wealth of opportunities.

# Wider Post-16 Curriculum

## The Diploma Award

The QE values of Respect, Reflection and Resilience, which are at the heart of the whole school ethos, also emanate through our Post-16 programme. At QE we pride ourselves on our unique Diploma Award, which takes inspiration from elements of the International Baccalaureate, encouraging participation in a wide range of enrichment activities, under the heading of Creativity, Action and Service in the community, alongside work experience, careers guidance and independent study, encouraging students to reflect on their experiences.

We believe that engagement in all areas of the Diploma Award gives our students the kind of broad and varied experience that will support them to move onto successful and rewarding destinations after QE. It forms the core of future UCAS and job applications and is formally certified and celebrated towards the end of the Spring Term of Year 13. Students are also strongly encouraged to take the Extended Project Qualification (see 'Courses available' for more information) alongside their A Level subjects, to add breadth to their programme.

## Study Plus

Our dedicated Study Plus room is manned full-time by our lead tutor and offers academic study support tailored to the individual needs of each student. This is a wonderful resource which can be accessed by any student who needs guidance on a specific aspect of their studies, for example in essay writing, revision skills or note taking. Many students have made huge improvements to their grades from making full use of the Study Plus room.

## Post-16 Tutors

Each tutor group has a relatively small number of students attached to them, so that we can retain that personal touch enabling all students to feel well supported. Our team of tutors are incredibly experienced in the Sixth Form world, and they run Personal Development Periods, once a week, teaching our programme of study and research skills, alongside one-to-one academic mentoring meetings at regular points throughout the year. This strong tutorial system offers specialised and highly-skilled support with UCAS, personal statements, CVs and job applications; we have a long standing, excellent track record of sending students to Oxbridge and other Russell Group universities, and are developing increasing links with higher apprenticeship providers.

## Aspire Scholars' Programme

The aim of our Aspire Scholars' programme is to support academically gifted Sixth Form students in their applications to the most competitive universities and/or for the most competitive courses. We offer a wealth of opportunities to stretch the most able students, with debating competitions, keynote speakers from a range of industries, universities and employers and trips to Oxbridge events. Regular drop-in sessions provide support with university and job applications, personal statements, interview techniques and mock interview practice. Aspire runs alongside MedSoc, a more specialist group specifically designed to support applicants for medicine, dentistry, nursing and veterinary science. Aspire also fosters an academic community within our Sixth Form in which students can discuss their interests and ambitions.

## Enrichment

As part of the Diploma Award, we expect all students at QE Sixth Form to get involved in the enrichment opportunities on offer in order to stand out from the crowd in their job and UCAS applications. A few of the things on offer are Duke of Edinburgh Gold Award, Ten Tors, Peer Mentoring, School Council Chairperson and a range of volunteering opportunities in the local area.

## Work Experience

We run a dedicated Work Experience week at the end of the Summer Term in Year 12. All students are encouraged to participate in this week, as part of their Diploma Award, with an emphasis on their chosen career.



# How to Apply

1. Read this booklet and seek advice on course choices from your tutor and careers advisor.
2. Fill in the application form and hand it in by **Friday 16th February 2024**. Ensure you have filled in all of the sections before submitting your application. External applicants, please post or email your application to the address on the back of this booklet.
3. After we receive your application form, you will be sent an acknowledgment letter.
4. You will then receive information on the date, time and place of your Sixth Form Course Progression Meeting. External applicants will be invited to a meeting with the Head of Sixth Form.
5. After all progression meetings are completed, conditional offer letters will be sent to students detailing other important dates, such as our Applicant Day in July. The Applicant Day gives you the opportunity to go to several taster sessions for your chosen subject.
6. Before the end of the summer term you will receive information on how you can enrol into the Sixth Form after you receive your exam results.



Applications remain open until August, but we advise you to return your application by February half term to avoid disappointment.

Please note: you are able to change your subject options after the official deadline, and we will try our best to accommodate all changes, although not all subject combinations will be possible. You will be notified if we are unable to timetable your subject choices.

It is important to note that, in common with all Post-16 providers, the availability of courses and combinations will depend on staffing and student numbers. Publication of courses in this booklet does not guarantee they will be able to run.

**For enquiries regarding the application process for external applicants please contact: [sixthformoffice@qe.devon.sch.uk](mailto:sixthformoffice@qe.devon.sch.uk)**

## Open Days

Further opportunities for external applicants to visit the school, look at our facilities and meet students and staff are available on the first Wednesday of every month during term time.

Please contact: [sixthformoffice@qe.devon.sch.uk](mailto:sixthformoffice@qe.devon.sch.uk)



## 16-19 Bursary Fund

We are allocated a cash-limited fund from central government which will be used wherever possible to provide support to those most in need, in order for students to access their courses.

There are two types of award available:

**Guaranteed Award for vulnerable learners:** for students in Care, Care Leavers and students in receipt of a PIP. These students will receive a guaranteed bursary of up to £1,200.

**Discretionary Award:** targeted at those who are facing financial hardship. The discretionary award is used to help students meet costs related to participation in their courses, for example transport to school, books, equipment and essential course trips.



# Extended Project Qualification

## Is this course for me?

All Sixth form students are given the opportunity to complete an Extended Project Qualification (EPQ). This allows students to extend their abilities beyond the A Level syllabus and prepare for university or their future career. It is worth half an A Level (28 UCAS points maximum) so can be used to earn extra UCAS points.

## What does the course involve?

The EPQ offers you a unique opportunity to develop essential skills for higher education and the workplace, in a subject area of your choice. Essentially, the EPQ is a personal project that is devised and managed independently, however, you will be allocated a supervisor to guide you through the process.

## What qualifications do I need?

There are no formal entry requirements for this subject.

## Where could this course take me?

An increasing number of universities are including the EPQ in their offers to students. Universities and employers use the EPQ as a basis for interviews.

## How will my work be assessed?

## EPQ

You will be assessed on your ability to plan, manage, complete and review your project. You will start the EPQ in Year 12 and hand in your final submission at the start of Year 13. Your work will be marked internally by your supervisor and moderated externally by AQA.

Assessment for A Level	Percentage of Final Mark
Examination	—
Coursework	100%
Specification Details	The exam board for A Level Project Qualification is AQA. The link to the specification: <a href="https://www.aqa.org.uk/subjects/projects/project-qualifications/EPQ-7993/introduction">https://www.aqa.org.uk/subjects/projects/project-qualifications/EPQ-7993/introduction</a>



# Maths

## Is this course for me?

Are you interested in Maths? Are you coping well with the demands of GCSE Maths? If the answer to these questions is yes then this course is for you. Within this course is an opportunity to apply your existing skills to more complex and interesting situations.

## What qualifications do I need?

We would expect you to have attained Level 7 or above within the Higher paper at GCSE Maths.



## What does the course involve?

You will develop your skills in mathematical argument, language and proof, mathematical problem solving and mathematical modelling. There will also be investigations involving areas such as proof, algebra, trigonometry and calculus. Additionally you will study units in mechanics to include kinematics and forces, and in statistics to include distributions and hypothesis testing.

## Where could this course take me?

For those wanting to go on to study scientific, engineering and design related courses, this course will prepare you well. Students have also continued their studies within medicine and astrophysics after this course. The course also supplements further study in geography, business, psychology and PE.



How will my work be assessed?		Maths A Level
You will be assessed via three 2-hour papers each marked out of 100 marks.		
Assessment for A Level		Percentage of Final Mark
Examination		100%
Coursework		—
Specification Details	The exam board for A Level Maths is AQA. The link to the specification is below: <a href="https://filestore.aqa.org.uk/resources/mathematics/specifications/AQA-7357-SP-2017.PDF">https://filestore.aqa.org.uk/resources/mathematics/specifications/AQA-7357-SP-2017.PDF</a>	

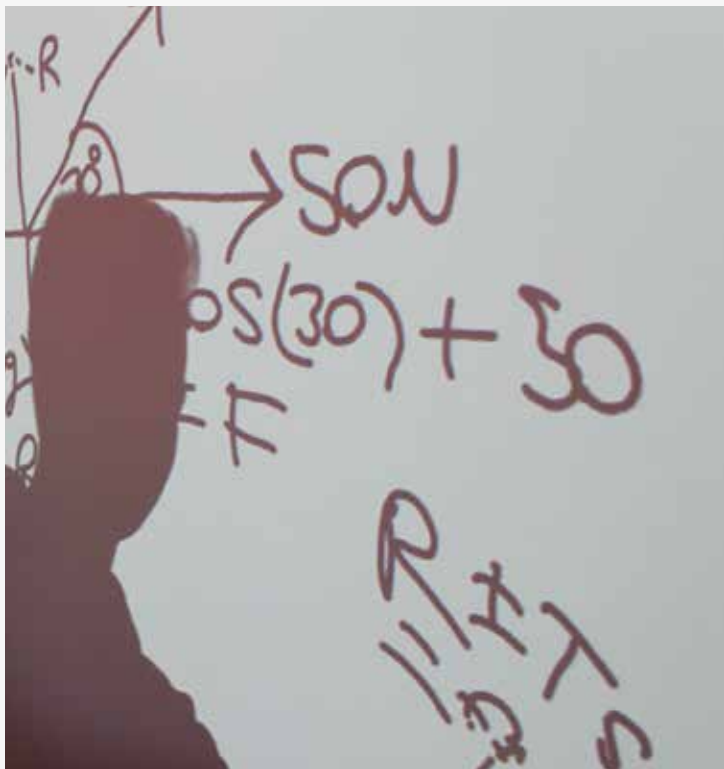
# Further Maths

## Is this course for me?

This can be taken in addition to the Maths A Level. This course is particularly useful for students wanting to go to higher education to study mathematics, engineering, computer studies or physics. Good Mathematicians will really enjoy this course as much as the teachers enjoy delivering the content.

## What qualifications do I need?

We would expect you to have attained Level 7 or above within the Higher paper at GCSE maths.



How will my work be assessed?		Further Maths A Level
You will be assessed via three 2-hour papers each marked out of 100 marks with your third paper containing content from the applied modules.		
Assessment for A Level		Percentage of Final Mark
Examination		100%
Coursework		—
Specification Details	The exam board for A Level Further Maths is AQA. The link to the specification: <a href="https://www.aqa.org.uk/subjects/mathematics/as-and-a-level/further-mathematics-7367">https://www.aqa.org.uk/subjects/mathematics/as-and-a-level/further-mathematics-7367</a>	



# Biology

## Is this course for me?

The study of life itself, A Level Biology explores the theories and principles involved in living systems, in all their intricate beauty. Topics you will learn about include: lifestyle, transport, genes and health, development, plants and the environment, the natural environment and species survival, energy, exercise and co-ordination, as well as practical biology and research skills. By the end of the course you will know about the principles of genetics, molecules, taxonomy, natural selection, evolutionary theory, global warming, bacteria and viruses, and more.

You will gain an understanding of how society makes decisions about scientific issues, as well some of the ways in which the scientific community contributes to the success of the economy and society.

If you are interested in recent developments in genetic engineering or disease prevention, understanding how we evolved, finding out how cells carry out so many different processes in a seemingly effortless fashion, tracking down natural resources, the true impacts of pollution on the natural world, or animal care and conservation programmes, to name a few, then this is your subject.

## What qualifications do I need?

As well as the standard entry requirements for Sixth Form at QE, we also require at least a grade 6 in Biology and one other science or a 6-6 or above in Combined Science GCSE. Due to the maths demand in A Level Sciences, we also require that entrants have at least a grade 6 in Mathematics.

## What does the course involve?

A Level Biology provides a solid grounding in analytical thinking, writing reports and clear communication – all of which are useful life skills. You will undertake laboratory and field experiments which underpin the theoretical study; they also hone your teamwork and practical abilities.

You will need to develop your knowledge and understanding of different areas of the subject and demonstrate how they relate to one another. Lab-work and writing up experiments will help you develop your skills and competence in scientific methods and scientific communication, and you will get plenty of practice in mathematical and problem-solving techniques, too.

A Level Biology includes a lot of names, so it's important to schedule your time efficiently to allow for regular revision as you are going along; keeping a glossary is a good idea too.

## Where could this course take me?

A Level Biology is a highly respected academic A Level and it makes an excellent choice, offering you access to a wide range of university courses and careers. You'll need biology for most degrees in medicine, biology, biomedical sciences, dentistry, dietetics, physiotherapy, orthoptics and veterinary medicine. Biology is usually required or recommended for courses in biochemistry, environmental science, nursing, occupational therapy, optometry, pharmacy, sports science, physiology and speech therapy.



How will my work be assessed?		Biology A Level
The A Level Biology course follows the same assessment pattern as any science A Level. Your A Level grade is determined by your performance in three written papers at the end of the course, which include questions relating to both theory and practical skills. Practical skills are assessed by your teacher during a minimum of 12 laboratory and field experiments, the results of which are sent to the exam board for moderation. Your practical skills result is reported alongside (but does not contribute to) your A Level grade.		
Assessment for A Level		Percentage of Final Mark
Examination		100%
Coursework		—
Specification Details	The exam board for A Level Biology is Edexcel A - Salters-Nuffield Biology. The link to the specification: <a href="https://qualifications.pearson.com/en/qualifications/edexcel-a-levels/biology-a-2015.html">https://qualifications.pearson.com/en/qualifications/edexcel-a-levels/biology-a-2015.html</a>	



# Chemistry

## Is this course for me?

Chemistry A Level is the study of materials and their properties. It covers all aspects of the subject, focusing on the three main areas of physical, organic and inorganic chemistry. The course is designed to stimulate and sustain interest in Chemistry by presenting it in a variety of situations, many of them involving practical work.

## What qualifications do I need?

You need at least a GCSE grade 6 in chemistry, or a 6-6 in combined science and grade 6 in GCSE maths.

## What does the course involve?

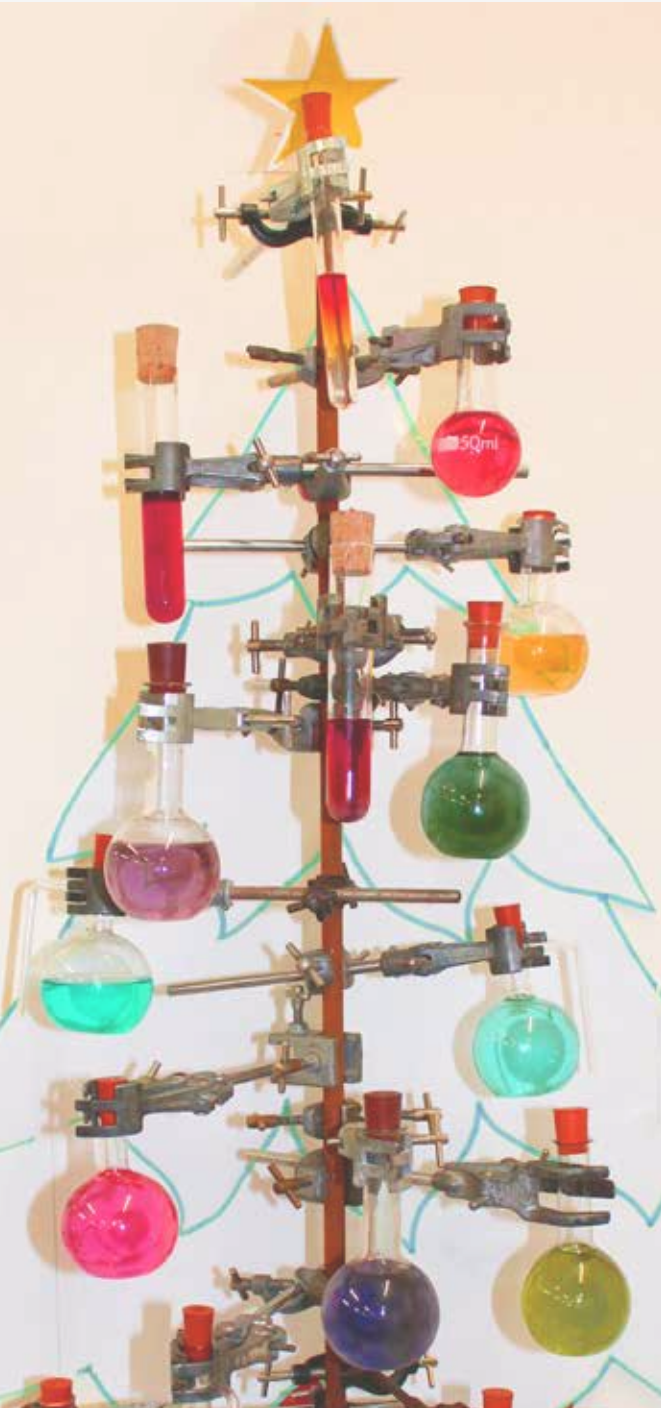
You will need to engage in a variety of lessons including practical sessions, problem solving, mathematical skills and theoretical work. You will be expected to work in small groups and individually.

You will be studying electronic structure, calculations in chemistry, equilibria, energetics, redox, transition metals, kinetics and organic chemistry.

## Where could this course take me?

Chemistry is a route to many careers including medicine, dentistry, veterinary science, biochemistry, materials science and teaching to name but a few.

An A Level in Chemistry will be useful for employment in general as it will exhibit high academic ability and determination in persevering with a difficult course.



## How will my work be assessed?

## Chemistry A Level

You will be assessed by regular homework tasks, end-of-topic tests, mock examinations, practical competence activities and your final examinations. The final exams consist of three papers.

Assessment for A Level	Percentage of Final Mark
Examination	100%
Coursework	-
Specification Details	The exam board for A Level Chemistry is Edexcel. The link to the specification: <a href="https://qualifications.pearson.com/en/qualifications/edexcel-a-levels/chemistry-2015.html">https://qualifications.pearson.com/en/qualifications/edexcel-a-levels/chemistry-2015.html</a>



# Physics

### Is this course for me?

This course is for you if you have a passion for exploring how the universe works, from the tiniest particle to the largest galaxy, and you are willing to persevere with challenging problems that stretch your mathematical and conceptual skills.

### What qualifications do I need?

You need at least a GCSE grade 6 in Physics, or Combined Science and grade 6 in GCSE Maths.

### Where could this course take me?

Physics is the route to many careers, from climate change work to designing apps and computer games. Possible career paths include Particle Physicist, Astrophysicist, Surgeon, Aeronautical Engineer, Sound Engineer, Clinical Scientist, Solar Energy Physicist, accountancy and teaching. Any role that requires a high degree of numeracy and/or a deeper understanding of the laws of Physics. More career ideas are shown on <http://www.physics.org/careers>.



### What does the course involve?

You will need to engage in a variety of lessons including practical sessions, problem solving, mathematical skills and theoretical work. You will be expected to work in small groups and individually. You will be studying mechanics, electricity, waves, particles, quantum phenomena, astronomy, radioactivity and electric and magnetic fields.



How will my work be assessed?		Physics A Level
You will be assessed by regular homework tasks, end-of-topic tests, mock examinations, practical competence activities and your final examinations		
Assessment for A Level		Percentage of Final Mark
Examination		100%
Coursework		—
Specification Details	The exam board for A Level Physics is Edexcel. The link to the specification is below: <a href="https://qualifications.pearson.com/en/qualifications/edexcel-a-levels/physics-2015.html">https://qualifications.pearson.com/en/qualifications/edexcel-a-levels/physics-2015.html</a>	



# Psychology

### Is this course for me?

Psychology is the scientific study of what we do, think and feel. Studying Psychology will give you the opportunity to reflect on why you and others behave in the way you do. The course involves writing regular highly analytical essays, participating in group tasks and discussions, conducting psychological investigations and analysing them using statistics. A mature approach to the complex subject matter is equally important.

### What qualifications do I need?

You do not need to have studied Psychology at GCSE level for entry onto the A Level Course. You will need five good passes at GCSE including English and Maths.

### What does the course involve?

There will be a range of diverse and interesting areas covered over the two years, such as crime, phobias, obedience and relationships. A Level Psychology is an academic subject involving a high level of analysis and essay writing skills.

### Where could this course take me?

Psychology is a useful subject for any career involving people. Possible careers involving psychology could be teaching, counselling, clinical, forensic, educational and sports psychology, social work, personnel, management, medicine and most areas involving interactions with others.

How will my work be assessed?		Psychology A Level
The course is assessed entirely through terminal exams, comprising of three 2 hour papers.		
Assessment for A Level		Percentage of Final Mark
Examination		100%
Coursework		—
Specification Details	The exam board for A Level Psychology is AQA. The link to the specification is below: <a href="https://filestore.aqa.org.uk/resources/psychology/specifications/AQA-7181-7182-SP-2015.PDF">https://filestore.aqa.org.uk/resources/psychology/specifications/AQA-7181-7182-SP-2015.PDF</a>	



# Art

## Is this course for me?

Do you have an adventurous, inquisitive and creative mind? This is the course for you if you enjoy drawing and painting, printmaking and working in 3D. A Level Art offers you the chance to work with a variety of different materials, processes and techniques to explore different ways of expressing yourself and the world in which we live.

## What qualifications do I need?

Ideally you need Level 4 or above at GCSE, in both Art and English. There is a written element to Art A Level and, as well as getting involved creatively in your practical portfolio, you also need to write an extended essay that connects to your practical portfolio.



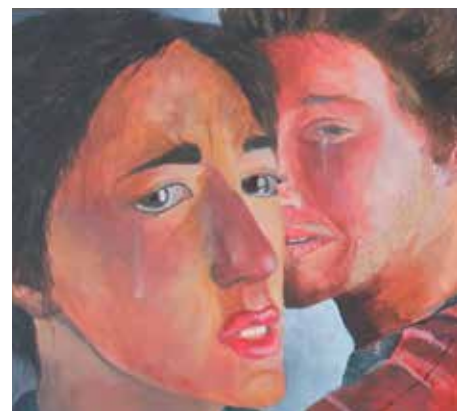
## What does the course involve?

The course has two components:  
**Component 1 - PERSONAL INVESTIGATION.** This is 60% of A Level where you will be developing a portfolio of work on a personal theme. You will research and develop ideas in your sketchbook and beyond, working in a variety of different materials and exploring different techniques and processes. Your preparatory work will lead on to a final piece or pieces. Your practical portfolio will be supported by the Related Study, the written element. This is a piece of extended writing of between 1000-3000 words.

**Component 2 - EXTERNALLY SET TASK.** 40% of A Level  
This is the exam where you respond to one chosen starter from the OCR set exam paper, available in February.

## Where could this course take me?

This is a Level 3 course and a great springboard to an Art Foundation course or directly on to an undergraduate course at university. Possible career pathways: fine artist, illustrator, photographer, textile designer, surface pattern designer, art and design teacher/lecturer, fashion designer, fashion stylist, interior designer, costume designer, gallery curator, sculptor and animator.



How will my work be assessed?		Art A Level
Your work in Art is continually assessed throughout the course by your class teachers. Feedback will be informal and verbal each lesson. You will also have feedback forms and assessment sheets that we use regularly to give you a clear indication of how your work is being judged against the exam boards assessment objectives.		
Assessment for the examination		Percentage of Final Mark
Examination		60%
Coursework		40%
Specification Details	The exam board for Art is OCR. The link to the specification is below; <a href="https://ocr.org.uk/Images/170210-specification-accredited-a-level-gce-art-and-design-h600-h606.pdf">https://ocr.org.uk/Images/170210-specification-accredited-a-level-gce-art-and-design-h600-h606.pdf</a>	



# Dance

## Is this course for me?

If you are enthusiastic about dancing, performing and choreographing and enjoy exercising, training and keeping fit, then this course would be ideally suited to you. A Level Dance reflects both historical and current dance practices, making it more relevant, and inspires a lifelong passion and appreciation for Dance. It provides you with the opportunity to acquire experience of performance and choreography and to engage in critical thinking about Dance. This is a dynamic qualification which encourages you to develop your creative and intellectual capacity, alongside transferable skills such as team working, communication and problem solving.

## What qualifications do I need?

Although studying GCSE Dance is not a requirement for this course, students must have had substantial experience of Dance and be excited about the prospect of developing their technique, performance and choreographic ability. Candidates with a grade 4 or above at GCSE, or equal achievement through the grade systems, would be ideal for this course.

## Where could this course take me?

This Level 3 course will lead you on to further study in higher education, whether as an undergraduate at university or Dance/Performance Conservatoire, and will give you the skills needed for employment within the professional field. Career pathways include dance artist, choreographer, arts administration for a Dance company, marketing, teacher, personal trainer, Yoga/ Pilates instructor, costume designer and dance notation.

## What does the course involve?

The course has two components:  
**Component 1: PERFORMANCE and CHOREOGRAPHY**  
This is 50% of the A Level and is a practical examination worth a total of 80 Marks. Here, you have the opportunity to develop and showcase your talent and skill as a performer. You will perform a solo linked to the stylistic features of a key practitioner such as Matthew Bourne, Akram Kahn or Gene Kelly, to name just a few. You will also perform in a quartet as well as developing your own piece of choreography based on a stimulus provided by the exam board. The choreography piece is a fantastic opportunity to really explore the possibilities of how dance can communicate and convey meaning to an audience.

**Component 2: CRITICAL ENGAGEMENT**  
This is 50% of the A Level and is a written examination worth a total of 80 Marks. The paper is split into two sections. Section A explores the development of Rambert Dance Company between the years 1966-2002, investigating the changes that occurred during this period and the influential practitioners who developed the work of the company. Christopher Bruce's seminal work Rooster is the set work, with short answer questions and one essay style question making up the structure of this section. Section B consists of two essay questions on the second set work and area of study; this being an exploration of the Independent Dance scene in Britain from 2000 to the present day, ensuring that we are always studying the developments in Dance that have happened in our most recent history.



How will my work be assessed?		Dance A Level
Your work in Dance is continually assessed throughout the course by your class teachers. Feedback will be informal and verbal each lesson. You will also have feedback forms and assessment sheets that we use regularly to give you a clear indication of how your work is being judged against the exam board's assessment objectives.		
Assessment for A Level		Percentage of Final Mark
Examination		50%
Coursework		50%
Specification Details	The exam board for Dance is AQA. The link to the specification is below: <a href="https://www.aqa.org.uk/subjects/dance/a-level/dance-7237">https://www.aqa.org.uk/subjects/dance/a-level/dance-7237</a>	



# Drama and Theatre

## Is this course for me?

If you have a passion for performance and are keen to develop your skills as an actor, director and designer then this is the course for you. Through this course you will have the opportunity to explore a range of different theatrical styles and learn how to apply the features of key practitioners to your own work. We aim to foster a life-long enthusiasm for the theatre, developing your ability to interpret both classical and contemporary texts and critically analyse the total dramatic effectiveness of a performance.



## What qualifications do I need?

It is useful to have taken Drama at GCSE but not essential and students must have achieved a Level 4 in English at GCSE. It is important that students are interested in gaining a greater understanding of how performance theories work in practice and that they are keen to be involved with performances. Students need to be curious about issues and ideas and have a creative instinct for communicating views through Drama.

## Where could this course take me?

This Level 3 course can lead to further study in Drama, Theatre Studies and Performing Arts in Higher Education. It is a very useful course for developing your analytical skills and can lead to a variety of career paths within the Performing Arts Industry, from acting to project management, theatre critic to stage management. Drama and Theatre Studies complements a range of subjects and is useful in building confidence and improving presentation and communication skills.

## What does the course involve?

The course has three components;  
**Component 1: Drama and Theatre**  
40% of A Level, 3 Hour Written Paper – 80 Marks  
Written exam based on the study of two set plays and their realisation on stage from the perspective of Director, Designer and Performer. Also, the analysis and evaluation of live theatre productions. The two plays studied during the course are Goldoni's slapstick farce, *The Servant of Two Masters*, and Polly Teal's *Brontë*, an expressionist play exploring the life of the Brontë family.

**Component 2: Creating Original Drama (Devising)**  
30% of A Level, Practical Examination – 60 Marks  
In this component you work in small groups to prepare, develop and perform a devised piece of drama influenced by the work and methodologies of one prescribed practitioner, which is internally assessed and externally moderated. A written piece of coursework (Working Notebook) is completed alongside this performance.

**Component 3: Making Theatre**  
30% of A Level, Practical Examination – 60 Marks  
In this component you complete a practical exploration and interpretation of three scripted extracts, each from a different, contrasting play. Extract 3 is performed in the style of a selected practitioner for the final assessment and a reflective written report accompanies the performance.



How will my work be assessed?	Drama and Theatre A Level
-------------------------------	---------------------------

Your work in Drama is continually assessed throughout the course by your class teachers. Feedback will be informal and verbal each lesson. You also have feedback forms and assessment sheets that we use regularly to give you a clear indication of how your work is being judged against the exam board's assessment objectives. Two written pieces of coursework support the practical performance pieces. Component 2 is internally marked and externally moderated and Component 3 is externally examined by a visiting examiner from AQA.

Assessment for A Level	Percentage of Final Mark
Examination	40%
Coursework	60%

Specification Details	The exam board for Drama & Theatre is AQA. The link to the specification is below: <a href="https://www.aqa.org.uk/subjects/drama/a-level/drama-and-theatre-7262">https://www.aqa.org.uk/subjects/drama/a-level/drama-and-theatre-7262</a>
-----------------------	---



# Music

## Is this course for me?

The music A Level course allows you to develop the knowledge and skills necessary for further study of music at a university or college. If you have a real passion for music, studying at A Level will expand and develop your passion whilst widening your knowledge and understanding of composers, genres and eras.

The course allows you to play to your strengths, adjusting the emphasis on composing or performing depending on your preference and ability. The rest of the course aims to develop listening skills for which you have a mixture of set works and unprepared material.

## What qualifications do I need?

Ideally you need either a Level 4 (or above) at GCSE or a BTEC Level 2 pass (or above), in Music. If you have not taken music at this level, it may still be possible to take the course if you play a musical instrument at Grade 5 or above.



## What does the course involve?

What does the course involve?  
**Component 1: Performing** – OPTIONS A OR B.  
Option A: (35%) A performance consisting of a minimum of three pieces. At least one of the pieces should be as a soloist.  
Option B: (25%) A performance consisting of a minimum of two pieces, either as a soloist, or as part of an ensemble, or a combination of both.  
**Component 2: Composing** – OPTIONS A OR B  
Option A: (25%) Two compositions.  
Option B (35%) Three compositions.

**Component 3: Appraising**  
The written examination focuses on three areas of study.  
Area of study A: The Western Classical Tradition covering the Development of the Symphony, 1750 – 1900.  
The second area of study will be selected from:-  
Area of study B: Rock and Pop (1960-2000)  
Area of study C: Musical Theatre (Rodgers, Bernstein, Sondheim Schonberg, Lloyd Webber and Schwartz)  
Area of study D: Jazz (1920-1960)  
The third area of study should be selected from either,  
Area of study E: Into the 20th Century, which includes two set works.  
Area of study F: Into the 21st Century, which includes two set works.

## Where could this course take me?

Music graduates have a wide range of career options available to them both inside and outside the industry, including: performer, teacher, music therapist, administrator, songwriter, conductor, composer, recording engineer, manager, promoter, or music publisher. The range of roles are endless!

There are more jobs than ever in music business related areas, and it continues to grow, such as: careers in digital marketing, social media, PR, technology, label services, ticketing and merchandising. It is also common to find music graduates in consultancy, finance, banking, music therapy and legal jobs.



How will my work be assessed?		Music A Level
Feedback is given on a one-to-one basis throughout the two year course. Component 1. Non-exam assessment: externally assessed by a visiting examiner. Component 2. Non-exam assessment: externally assessed by WJEC Eduqas. Component 3. Written examination: 2 hours 15 minutes approximately.		
Assessment for A Level	Percentage of Final Mark	
Examination	40%	
Performance and Composition	60%	
Specification Details	The exam board for Music is Eduqas. The link to the specification is below: <a href="https://www.eduqas.co.uk/qualifications/music/as-a-level/">https://www.eduqas.co.uk/qualifications/music/as-a-level/</a>	



# BTEC Music

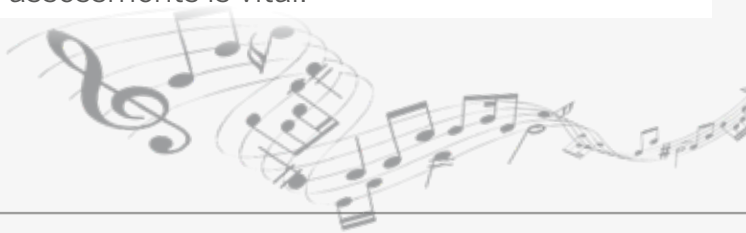
## Is this the course for me?

This course is aimed primarily at students who are interested in developing practical musical skills together with music theory and industry knowledge. It is a highly practical course and is centred on performing, relevant music theory and industry practice.

## What qualifications do I need?

You do not need to have studied music at GCSE level or BTEC Level 2 for entry onto the course. Besides the overall entry requirements to enter the Sixth Form, you must be prepared to have regular instrumental lessons and attend one of the school ensembles.

The ability to adhere to coursework deadlines and work independently to complete written assessments is vital.



## How will my work be assessed?

### Ensemble Music Performance

You will learn about good practice and preparation for rehearsal and performance through a series of worksheets, discussions, practical exercises and evaluation.

External Assessment

### Practical Music Theory and Harmony

You will learn about relevant music theory through a series of exercises and worksheets. Many of the exercises will need to be implemented practically.

Internal Assessment

### Professional Practice in the Music Industry

You will learn about the music industry through individual research, case studies and worksheets.

External Assessment

### Music Performance Session Styles

Sessions Styles involves you learning to perform in a range of different styles, for example, Jazz, Punk, Reggae and Soul as well as learning about the origins and musical influence of each of these genres. This will be through research, discussions, practical exercises, workshops and performances.

Internal Assessment

Specification Details

The exam board for Pearson BTEC Level 3 National Certificate in Music Performance  
[https://qualifications.pearson.com/content/dam/pdf/BTEC-Nationals/Music/2017/Specification/9781446928110\\_BTEC\\_Nat\\_ExtCert\\_Music\\_Spec\\_prepubfinal.pdf](https://qualifications.pearson.com/content/dam/pdf/BTEC-Nationals/Music/2017/Specification/9781446928110_BTEC_Nat_ExtCert_Music_Spec_prepubfinal.pdf)

## What does the course involve?

The course covers the core aspects of practical music skills, and relevant industry knowledge. Students studying on this programme will have a keen interest in developing their musical knowledge and skills. This course attracts UCAS points in the same way as an A-level. Students are required to study a range of units over two years. The course is two years in length and 42% of assessment is via coursework, which is internally assessed.



## Where could this course take me?

Music can open doors to a range of education and employment pathways in a wide range of careers. These include a sound technician, community musician, music therapist, teacher, or private tutor, or a range of careers in the music industry, in a concert hall or music venue. Further afield there are opportunities in the arts/creative industries. This might include work in film, TV, theatre, radio, arts administration, or creative education.

In professions such as medicine, law, accountancy music is highly regarded as an academic subject and so could complement your other studies in leading to a professional career.



# Photography

## Is this course for me?

Photography is all about looking! It's the art of observation. If you are a keen observer of the world, if you find beauty and interest in the mundane, then this is the course for you.

## What qualifications do I need?

Ideally you will have studied GCSE Photography. You will also need a pass in English Language GCSE.



## What does the course involve?

The course has two components:  
**Component 1 - PERSONAL INVESTIGATION.** This is 60% of A Level where you will be developing a portfolio of work on a personal theme. You will be working with traditional photography techniques that will take you into the darkroom, as well as exploring the possibilities of working with digital based media to realise your outcomes. Your practical portfolio will be supported by the Related Study, the written element. This is a piece of extended writing of between 1000 - 3000 words.

**Component 2 - EXTERNALLY SET TASK.** This is the exam where you respond to one chosen starter from the OCR set exam paper, available in February.

## Where could this course take me?

This is a Level 3 course and a great springboard to an Art Foundation course or directly on to an undergraduate course at university. Career pathways include fashion photography and styling, editorial photography, photojournalism, studio photographer, travel photographer, sports or freelance photographer.



How will my work be assessed?		Photography A Level
Your work in Photography is continually assessed throughout the course by your class teachers. Feedback will be informal and verbal each lesson. You also have feedback forms and assessment sheets that we use regularly to give you a clear indication of how your work is being judged against the exam board's assessment objectives.		
Assessment for A Level		Percentage of Final Mark
Examination		40%
Coursework		60%
Specification Details	The exam board for Photography is OCR. The link to the specification is below: <a href="https://ocr.org.uk/Images/170210-specification-accredited-a-level-gce-art-and-design-h600-h606.pdf">https://ocr.org.uk/Images/170210-specification-accredited-a-level-gce-art-and-design-h600-h606.pdf</a>	

# Open Mornings



Come to one of our Sixth Form Open Mornings!

The First Wednesday of Each Month (term time only)

Between  
**9.00am**  
and  
**11.30am**

Meet our Head of Sixth Form

Tour our Western Road Campus

Meet our Sixth Form Leadership Team

Enjoy a Taster Lesson

Introduction to our Aspire Programme

Contact Jasmin Groom on: 01363 778364 Email: [jasmin.groom@qe.devon.sch.uk](mailto:jasmin.groom@qe.devon.sch.uk)



# Design and Technology

## Is this course for me?

Design and technology is an inspiring, rigorous and practical subject. Using creativity and imagination, students design and make products that solve real and relevant problems within a variety of contexts, considering their own and others' needs, wants and values. Students acquire a broad range of subject knowledge and draw on disciplines such as mathematics, science, engineering, computing and art.

Students learn how to take risks, becoming resourceful, innovative, enterprising and capable individuals. Through the evaluation of past and present design and technology, they develop a critical understanding of its impact on daily life and the wider world. High-quality design and technology education makes an essential contribution to the creativity, culture, wealth and well-being of the nation.

If you want to make a difference, if you want to contribute to a better future for all or simply just love creating new and innovative products, then A Level Design and Technology is the path you should take.

## What qualifications do I need?

You must have a minimum grade 5 in Design and Technology or equivalent specialisms, e.g., graphic product design, engineering, fashion and textiles or resistant materials, etc. It is also recommended that you have a level 4 or above in mathematics, English and science. We will consider students with a desire to pursue a career in Design but have not had an opportunity to accrue the required entry qualifications. You will need an interview and a portfolio of work in these circumstances.



## What does the course involve?

This creative and thought-provoking qualification will give you the practical skills, theoretical knowledge and confidence to succeed in a number of careers, especially those in the design and creative industries. You will investigate historical, social, cultural, environmental and economic influences on design and technology, whilst enjoying opportunities to put your learning into practice by producing prototypes of your designs. You will gain real understanding of what it means to be a product designer, alongside the knowledge and skills sought by higher education and employers.

**Component 1:**  
Design and Technology in the 21st Century. Learners take a single examination in one of the following endorsed areas: Fashion and textiles or product design.

The examination includes a mix of structured and extended writing questions assessing learners' knowledge and understanding of:

Technical principles, designing and making principles along with their ability to analyse and evaluate wider issues in design and technology.

**Component 2:**  
Design and make project Non-exam assessment: approximately 80 hours 50% of qualification. A sustained design and make project, based on a brief developed by the candidate, assessing the candidate's ability to identify, investigate and outline design possibilities, design and make prototypes, analyse and evaluate design decisions and outcomes, including for prototypes made by themselves and others. The design and make project will be based within the same endorsed area as the written examination.



## Where could this course take me?

If you want to study design and technology at university, some courses require you to have completed the subject as one of your A Levels.

Although some university courses may not list design and technology as an entry requirement, it can still be very helpful for courses in architecture, engineering, information technology and computer science. An A Level in design and technology can also be useful for apprenticeships in carpentry, construction, food manufacture, fashion and textiles, interior manufacturing, and engineering technology.

The future for students taking Design and Technology is very exciting. It can set you up for a career in a wide variety of industries such as fashion, engineering, architecture, information technology, careers in hospitality, and even education.

Popular careers for people with design and technology qualifications include: product designer, architect, software engineer, civil engineer, carpenter, graphic designer, armed forces, fashion designer, tailor and chef to name a few.

How will my work be assessed?		Design and Technology A Level	
Written examination: 3 hours 50% of qualification. Design and make project Non-exam assessment: approximately 80 hours 50% of qualification. A sustained design and make project, based on a brief developed by the candidate,			
Assessment for A Level		Percentage of Final Mark	
Examination		50%	
Coursework/Project		50%	
Specification Details	The exam board for A Level Design and Technology is Educas/EJEC. The link to the specification: <a href="https://www.eduqas.co.uk/qualifications/design-and-technology-as-and-a-level/#tab_keydocuments">https://www.eduqas.co.uk/qualifications/design-and-technology-as-and-a-level/#tab_keydocuments</a>		



# Computer Science

## Is this course for me?

Do you enjoy problem-solving? Are you able to think systematically? Do you like finding out how things work? If so, this course is for you. You don't have to be a "computer person" to do computer science. Computer science will give you a set of tools with limitless potential: to build machines, design applications and understand processes, and take them wherever you want to go.

## What qualifications do I need?

Grade 6 or above in GCSE Maths and Grade 6 or above in GCSE Computer Science (if taken). GCSE Computer Science is not essential for this course, but those who have not taken it will need to demonstrate an aptitude for computer programming (through a short test).



## What does the course involve?

Half of the course is devoted to the theory and practice of computer programming. You will learn about topics ranging from the abstract world of Turing machines to the more practical aspects of programming in Python. The other half of the course deals with areas of computer science not associated with programming. You will learn about areas such as data representation, network design and the hot topic of Big Data. Finally, the non-examination assessment will give you the experience of designing and building a software application to solve a practical problem.

## Where could this course take me?

This course will prepare you well for a wide range of jobs, ranging from software developer to hardware engineer, in sectors as diverse as cyber security, fintech and digital animation. A knowledge of computer programming is also advantageous for anyone wishing to study mathematics, natural sciences, engineering or design-related courses at university.



How will my work be assessed?		Computer Science A Level	
You will be assessed via two 2 ½ hour papers and a non-examination assessment component.			
Assessment for A Level		Percentage of Final Mark	
Paper 1 (On Screen)		40%	
Paper 2 (written)		40%	
Non-examination assessment		20%	
Specification Details	The link to the specification: <a href="https://filestore.aqa.org.uk/resources/computing/specifications/AQA-7516-7517-SP-2015.PDF">https://filestore.aqa.org.uk/resources/computing/specifications/AQA-7516-7517-SP-2015.PDF</a>		

# French

## Is this course for me?

This course is for budding linguists who have a passion for languages and want to find out more about French and the culture of France. If this is you, then yes!

## What qualifications do I need?

You will need at least a Grade 5 in French at GCSE.



## Where could this course take me?

The sky is the limit! Obviously languages are very popular to study at universities, but they are also required more and more in non-language degrees, which often include a work experience abroad option, or in businesses. From being a ski instructor to working in marketing, languages are everywhere and recognised as being extremely useful.

## What does the course involve?

Over the course of the two years you will study social issues and trends, political, intellectual and artistic culture, alongside film and a literary text. The aims of the course are to encourage students to:

- Develop an interest in, and an enthusiasm for language learning.
- Develop an understanding of language in a variety of different contexts.
- Communicate confidently, clearly and effectively in the target language for a range of purposes;
- Develop awareness and understanding of contemporary society.



How will my work be assessed?		French A Level	
You will be assessed in all four skills - listening, reading, writing and speaking. There are three papers in total, which are all externally marked, and will include translations, some grammar exercises and responses to literary and film questions. There is also a research project which forms the basis of the oral examination and a chance to be creative!			
Assessment for A Level		Percentage of Final Mark	
Examination		100%	
Coursework		—	
Specification Details	The exam board for A Level French, is Eduqas. The link to the specification is below: <a href="https://www.eduqas.co.uk/qualifications/french-as-a-level/#tab_keydocuments">https://www.eduqas.co.uk/qualifications/french-as-a-level/#tab_keydocuments</a>		



# English Literature

## Is this course for me?

Do you love reading a wide range of texts in different forms (prose, poetry and drama)? Do you enjoy exploring your ideas about texts in discussion and writing? Do you like learning about the world both past and present through literature? Are you keen to go on theatre trips and to see writers talking about their work? If the answer to these questions is 'yes' then English literature is for you!

## What qualifications do I need?

Candidates, as well as needing a minimum of five grade 4s at GCSE, should have good English skills with Grade 5 in GCSE English Language and Literature at the very least, but preferably a 6.

## Where could this course take me?

A qualification in English Literature gives you a range of transferable skills desired by employers, including the ability to communicate in both verbal and written forms and effective analytical skills. It can lead to a career in a wide range of fields including: the media and creative industries (including advertising, broadcasting, and journalism), education and publishing.



How will my work be assessed?		English Literature A Level
Assessment for A Level		Percentage of Final Mark
Examination Paper 1		40%
Examination Paper 2		40%
Non Exam assessment		20%
Specification Details	The exam board for A Level English Literature is AQA. The link to the specification: <a href="https://www.aqa.org.uk/subjects/english/as-and-a-level/english-literature-a-7711-7712">https://www.aqa.org.uk/subjects/english/as-and-a-level/english-literature-a-7711-7712</a>	

## What does this course involve?

**A Level**  
The focus of this course is a historicist approach – studying a range of literature written at different time periods. These texts are thematically linked in the first year through the topic 'Love through the Ages'. This involves the study of a Shakespeare play (*Othello*) a range of prose texts from the 19th and 20th Centuries including 'The Great Gatsby' and a collection of poetry from different time periods.

We go on to explore a variety of contextual issues in a unit entitled Modern times: Literature from 1945 to the Present Day where we explore prose, play and poetry texts discussing issues such as the impact of society on a person's identity.

**A Level**  
2 x exams (Paper 1 - 3 hours; Paper 2- 2hours 30 minutes)  
**Paper 1: Love through the Ages**  
Section A Shakespeare  
Section B Unseen Poetry  
Section C Comparing prose and poetry studied  
**Paper 2: Modern Times**  
Section A One question on set text;  
Section B Two parts; one question on an unseen text; one essay comparing 2 texts studied.

**NEA – Non Exam assessment worth 20%**  
Students will complete a 2500 word comparative essay on two texts written at different time periods. They are free to choose their own texts and area of focus, with guidance from their teachers.

# Level 3 Applied Certificate/Diploma in Criminology

## Is this course for me?

Are you interested in exploring the effects police and state failings have on society. This course will cover everything from inequality to prejudice, and how this impacts our day-to-day lives.

The heart of Criminology is that crime is what the law says it is, but as we all know, the law changes over time and they're made by those in positions of privilege, wealth and power.

Criminology is a stimulating subject that will cover issues that have a tangible impact on society. A passion for topics covered in the course is necessary, as well as an enjoyment in taking part in healthy, engaging debates, opening up new ways of thinking.

## What qualifications do I need?

The exams for this course are essay based, so you will need to have a grade 4/5 or above in English Literature or Language. You do not need to have studied Criminology at GCSE.

What does the course involve?

This is a two year course, divided into the following Units: 1 – Changing Awareness of Crime - planning campaigns for change relating to crime. 2 – Criminological Theories - understanding of the public perceptions of crime and campaigns for change. 3 – Crime Scene to courtroom. 4 - Crime and punishment.



## Where could this course take me?

An understanding of criminology is relevant to many job roles within the criminal justice sector, social and probation work and sociology and psychology. Alternatively, the qualification allows learners to gain the required understanding and skills to be able to consider employment within some aspects of the criminal justice system, e.g. the National Probation Service, the Courts and Tribunals Service or the National Offender Management Service.



How will my work be assessed?		Criminology Level 3 Applied Certificate/Diploma
There will be one 90-minute exam at the end of the course.		Percentage of Final Mark
Examination		50%
Coursework		50%
Specification Details	The exam board for Criminology Level 3 Applied Certificate/Diploma, is WJEC. The link to the specification is: <a href="https://www.wjec.co.uk/qualifications/criminology-level-3/#tab_keydocuments">https://www.wjec.co.uk/qualifications/criminology-level-3/#tab_keydocuments</a>	



# Law

## Is this course for me?

Are you interested in how our society is regulated? Would you like to know more about how our laws prohibit harmful behaviour, uphold individual rights and seek to achieve justice?

Understanding our legal system and the way different areas of law (e.g. criminal law or human rights law) work, is both fascinating and empowering. If you wish to feel informed about the society you live in, and able to engage with its rules and regulations, then this course is for you.

## What does the course involve?

You will study the English Legal System (the courts and legal personnel) and the following three areas of law: criminal, tort, and human rights.



How will my work be assessed?		Law A Level
There are three two-hour exams at the end of the two-year course.		
Assessment for A Level		Percentage of Final Mark
Examination		100%
Coursework		—
pecification Details	The exam board for A Level Law is AQA. The link to the specification is below: <a href="https://filestore.aqa.org.uk/resources/law/specifications/AQA-7162-SP-2017.PDF">https://filestore.aqa.org.uk/resources/law/specifications/AQA-7162-SP-2017.PDF</a>	

## What qualifications do I need?

A level 5 in GCSE English Language is recommended.

You need to be comfortable reading and writing English, as all of the concepts in law are expressed through language.

You will also need to be able to write answers to exam questions in which you explain legal concepts accurately and apply the law you have learned in a structured way.

## Where could this course take me?

Some of our students have gone on to do legal apprenticeships, others have undertaken university degrees in disciplines such as Law, Criminology, Politics, International Relations, Sociology, and Police Studies.

An understanding of the law is a valuable skill for any workplace environment as law regulates all businesses. Some former QE Law students have gone on to work in property development, insurance and human resources; others have qualified as barristers and solicitors.



# Business

## Is this course for me?

Business at A Level is a challenging subject with high standards of both numerical and literacy skills required. It is not mandatory to have studied Business at GCSE but students must have a genuine interest in the business world. It is essential that students can express themselves clearly in written work and join the course prepared to appreciate and challenge business objectives.

## What qualifications do I need?

Level 5 at both Maths and English Language is recommended.

## Where could this course take me?

Business is a popular A Level and useful for taking a very wide range of university degree courses, including most subjects in the Humanities. In the field of business and allied areas, degree courses include: business management, business administration, accountancy, advertising, international business and development, finance, human resource management, marketing and law.

It can also lead to a career in the commercial world, e.g. banking, sales, accountancy and management.



How will my work be assessed?		Business A Level
Assessment for A Level		Percentage of Final Mark
Examination Paper 1 Paper 2 Paper 3		100% in Total 35% 35% 30%
Coursework		—
Specification Details	The exam board for A Level Business is Edexcel. The link to the specification is below: <a href="https://qualifications.pearson.com/en/qualifications/edexcel-a-levels/business-2015.html">https://qualifications.pearson.com/en/qualifications/edexcel-a-levels/business-2015.html</a>	



# Geography

## Is this course for me?

This stimulating subject builds on knowledge gained at GCSE level, but will also provide you the opportunity to encounter different elements of geography that you have not experienced before. It combines well with a wide variety of other subjects – both arts and sciences. It will allow you to engage critically with real world issues and places, and to apply your geographical knowledge, theory and skills to the world around you. It will equip you with the skills to become independent thinkers and informed and engaged citizens, who understand the role and importance of geography as one of the key disciplines relevant to understanding the changing world.

## What qualifications do I need?

A grade 5 in geography is recommended. However, it is NOT essential to have completed Geography at GCSE, as long as you have a grade 5 in English and Mathematics.



## Where could this course take me?

The nature of working lives is changing. It is less likely that you will spend all of your working life in one organisation or even in the same sector. If your career path is to be varied, you will need transferable skills and flexibility. Geography provides you with these. It is a highly valued qualification by employers offering a diverse range of career choices, such as, outdoor education, Forestry Ranger, countryside management, Travel and tourism, to name only a few. Geography was rated as the most employable subject in a survey of university graduates. It is a key facilitating A Level that the Russell Group universities encourage students to take. The skills that you acquire can lend themselves to careers such as GIS Specialist, Chartered Surveyor, Lawyer or Environmental Planners.

## What does the course involve?

The course involves an equal mix of physical and human topics. There is also a mixture of core and optional topics:

**Unit 1:** Dynamic landscapes and sustainability, tectonic places and hazards, landscape systems and coastal management, the water cycle and water insecurity, the carbon cycle and energy insecurity, climate change futures.

**Unit 2:** Dynamic Places and Geopolitics Globalisation, shaping places: rural and urban rebranding strategies, superpowers and the rise of the BRICS, global connections: international migration issues and global futures.

**Unit 3:** Independent Fieldwork Investigation.

How will my work be assessed?		Geography A Level
The course consists of three externally examined papers and one non-examination assessment component.		
Assessment for A Level		Percentage of Final Mark
Examination Paper 1		30%
Examination Paper 2		30%
Examination Paper 3		20%
NEA (non-examined assessment)		20%
Coursework		—
Specification Details	The exam board for A Level Geography is Edexcel. The link to the specification: <a href="https://qualifications.pearson.com/en/qualifications/edexcel-a-levels/geography-2016.html">https://qualifications.pearson.com/en/qualifications/edexcel-a-levels/geography-2016.html</a>	

# History

## Is this course for me?

If you have a real interest in history and the study of the subject, this course will be an exciting and challenging experience. It is highly valued by universities and employers allowing you to develop valuable transferable skills including analysis, communication and research.

## What qualifications do I need?

A grade 5 in History is recommended as well as grade 5 in English and Maths. You do NOT need to have done GCSE History,



## What does the course involve?

The course is split into two units; the Tudors, which analyses all of the Tudor Monarchs and the England they ruled over, and International Relations 1890-1941. This explores the rise of European tensions and how the world went to war twice. There is also a coursework element where you research a topic in depth.

## Where could this course take me?

This course can take you successfully into almost any aspect of further study because of the skills that it teaches you. It is particularly useful if you wish to study any subject within the humanities, arts, or others requiring creativity and extended writing. In terms of direct employment it has a very wide scope but typically journalism, law, academic research, civil service, government, project management and events, and education.



How will my work be assessed?		History A Level
Assessment is in by coursework element and two final examinations.		
Assessment for A Level		Percentage of Final Mark
Examination Paper 1		40%
Examination Paper 2		40%
Coursework		20%
Specification Details	The exam board for A Level History is AQA. The link to the specification is below: <a href="https://www.aqa.org.uk/subjects/history/as-and-a-level/history-7041-7042">https://www.aqa.org.uk/subjects/history/as-and-a-level/history-7041-7042</a>	



# Philosophy and Ethics

## Is this course for me?

If you love discussion and debate, have a sense of intrigue about what goes on in the world, then this is the course for you. We cover three subjects in this course: Philosophy, Ethics and Buddhism. Religious Studies encourages critical and systematic inquiry into fundamental questions of right and wrong, truth and falsehood, the meaning of life, and the nature of reality, knowledge and society. More than any other discipline, philosophy and ethics explores the core issues of the Western intellectual tradition.

## What qualifications do I need?

At least a grade 5 in English is recommended, (five GCSES at grade 4-9). A GCSE in RS at grade 5 or above is an advantage but not a requirement however an interest in philosophical and ethical debates is.

## Where could this course take me?

Philosophy and Ethics at A Level is as useful to those students considering further education as it is to pupils entering employment. The qualification is highly regarded by universities and employers because of its underlying skills base. The skills of empathy, evaluation, forming a coherent argument, critical analysis and debate are applicable across a wide range of professions. It is an excellent preparation for a career in law, medicine, business, international diplomacy, social work, banking, armed forces, public relations, publishing, journalism, retail, librarian, counselling, marketing, consulting, civil service, teaching and accountancy (to name just a few!).

## How will my work be assessed? Philosophy and Ethics A Level

Assessment for A Level	Percentage of Final Mark
Examination	100%
Specification Details: The exam board for A Level Philosophy & Ethics is WJEC Eduqas. The link to the specification is below: <a href="https://www.eduqas.co.uk/media/i4tjifbc/eduqas-a-level-religious-studies-spec-from-2016-e-011020.pdf">https://www.eduqas.co.uk/media/i4tjifbc/eduqas-a-level-religious-studies-spec-from-2016-e-011020.pdf</a>	

## What does the course involve?

- What skills does studying philosophy and ethics develop?
- Generate ideas on a variety of problems
  - Formulate and solve problems; uncover assumptions and suggest alternatives
  - Ability to distinguish subtle differences without overlooking similarities
  - Analyse, develop and formulate logical arguments
  - Capability to make knowledgeable decisions, examining thoroughly the consequences of various actions
  - Aptitude to examine various angles of topics
  - Ability to write and speak clearly and effectively; interpret and assess various thoughts and theories

How will you learn?  
Lessons will involve a range of different approaches to appeal to all learning styles. Alongside traditional teaching through the use of PowerPoint delivery and note taking, there will be textbook reading and research. In addition there will be an emphasis on flipped learning encouraging students to take responsibility for their own learning to fully benefit from lessons and develop skills which will prepare them for university. Seminar style lessons, debates and group discussions are built into schemes of learning where appropriate to allow controversial issues to be fully explored.

- What will you study?
- 1.The Study of Religion - Buddhism Religious figures and Sacred texts, religious concepts; religious life; religious practices. development of religious thought and contemporary issues; religious identity.
  2. Philosophy of Religion - cosmological argument for the existence of God; Teleological Argument for the existence of God; The Non-Existence of God: the Problem of Evil; Religious Experience. Arguments for the existence of God; Challenges to religious belief; Religious Language.
  3. Ethics and Religion - Ethical Language and Thought; Aquinas' Natural Law; Fletcher's Situation Ethics; Utilitarianism. All applied to euthanasia and abortion. Deontological ethics; Teleological ethics; Freewill and Determinism. All applied to embryo research, experimentation, transplantation and genetic engineering.

# Sociology

## Is this course for me?

This Sociology course provides you with an exciting opportunity to gain a deeper understanding of the world around you and reflect on the social issues of modern contemporary society. Over the two years, we will study a variety of themes including Socialisation, Culture, Identity, Power, Control and inequality within our society. Throughout the course we will explore and debate a variety of questions enabling us to develop a greater understanding of the world around us.

## What qualifications do I need?

The exams for this course are all essay based, so you will need to have a grade 4/5 or above in English Literature or Language. You do not need to have taken Sociology at GCSE.



## What does the course involve?

This is a two year course, divided into the following components: Crime and Deviance, Education in Society, Beliefs in Society, Families and Households and Social Theory and Research Methods.

## Where could this course take me?

Many of our students go on to undergraduate study at university on social science courses including sociology, social work and social policy, criminology, international relations, anthropology and politics. Sociology is a subject that supports other academic disciplines such as geography, philosophy, psychology, law, sports studies and English language. Our students find employment in a wide variety of labour market sectors including policing, law, nursing, human resources, the charity sector and public service such as housing and local government administration. Students often go on to work as researchers in government think tanks, universities and public policy institutes.



## How will my work be assessed?

## Sociology A Level

There will be three written papers of two hours at the end of the course.	
Assessment for A Level	Percentage of Final Mark
Examination	100%
Coursework	—
Specification Details	The exam board for A Level Sociology is AQA. The link to the specification is below: <a href="https://www.aqa.org.uk/subjects/sociology/as-and-a-level/sociology-7191-7192/subject-content-a-level">https://www.aqa.org.uk/subjects/sociology/as-and-a-level/sociology-7191-7192/subject-content-a-level</a>



# Health and Social Care

## Is this course for me?

Do you enjoy the thought of entering a career where you will care for adults or children? Do you enjoy the thought of learning about content that is relevant and applied to real life scenarios in care environments? If the answer to these questions is yes, this A Level equivalent course is for you.

## What qualifications do I need?

It is incredibly desirable if students achieve a grade 5 or above in your Sciences or studies the OCR Health and Social Care course in Year 10/11. Please note that you do not necessarily have to have completed Health and Social Care in Year 11 to enrol on to this course.

## What does the course involve?

The course combines exam with largely coursework content. The units you will study include the areas of Health Psychology, Anatomy and Physiology, Equality Diversity and Rights as well as how to build positive relationships with your clients/patients. Due to the 'real context' for so much of the content on this course, visits from Care Workers, Occupational Therapists and Sexual Health Specialists are common place.

## Where could this course take me?

Typically students who embark on this course enter careers in the Health Service. From nursing to midwifery, childcare and occupational therapy, this course is a fantastic precursor to many career paths and higher education routes.



How will my work be assessed?	H and SC OCR Cambridge Technical Level 3 Certificate
Over the two years you will complete 6 units for which the majority will be course work assessed. However there are exams as part of the course for which one unit; Anatomy and Physiology requires students to complete an exam which is largely Science Biology in nature, hence the requirement for a solid foundation in Science to complete this course.	
Specification Details	OCR Cambridge Technical Level 3 Certificate in Health & Social Care. The link to the specification: <a href="https://www.ocr.org.uk/Images/260585-cambridge-technicals-health-and-social-care-summary-brochure.pdf">https://www.ocr.org.uk/Images/260585-cambridge-technicals-health-and-social-care-summary-brochure.pdf</a>

# Physical Education

## Is this course for me?

Are you interested in discovering what makes an elite level sports person tick? From Sports Psychology to Sports Physiology and Biomechanics this course gives an incredibly varied look at how coaches and teachers can maximise elite performance and that of your own performance! As well as this, you will be led through Sports History in the UK and the structure of Sport in this country. You will need to have proven expertise in one sport of your choice, which is on the recognised list of sports from AQA (see specification).

## What qualifications do I need?

It is desirable if students achieve a grade 5-6 or above in GCSE PE or your Sciences. Please note that you do not necessarily have to have completed GCSE PE to enrol on this course.

## What does the course involve?

The course combines theory with practice. Where possible, your teachers will teach the theory through practical means as the context for a lot of the content is about how to improve sporting performance. The course is delivered by a variety of teachers and combines the various disciplines as listed in the 'is this course for me?' section. Much of the theory is scientific and asks you to think and work like a Sports Scientist/ Sports Psychologist.

## Where could this course take me?

From Coaching to Teaching, work in the sports industry or Health Service/Physiotherapy, this course prepares you for a plethora of careers or higher education paths.



How will my work be assessed?		Physical Education A Level	
There is regular testing of class based work and home learning. There is also extended writing practice as the exams require you to do this. The course is assessed via two, 2 hour papers accounting for 70%. The remaining 30% of the course is assessed via non exam assessment which involves a piece of self-analytical coursework and practical assessment in your one chosen sport.			
Assessment for A Level		Percentage of Final Mark	
Examination		70%	
Coursework		30%	
Specification Details	The exam board for A Level Physical Education is AQA. The link to the specification is below: <a href="https://filestore.aqa.org.uk/resources/pe/specifications/AQA-7582-SP-2016.PDF">https://filestore.aqa.org.uk/resources/pe/specifications/AQA-7582-SP-2016.PDF</a>		



# BTEC Sport and Outdoor Activities

## Is this course for me?

Do you enjoy the great outdoors and taking advantage of this beautiful county and country of ours? Do you enjoy the thought of regular practical lessons and completing a one week residential in the Scottish Highlands? If the answer to these questions is yes, this course is for you. This course is equivalent to 1.5 A Levels so is studied alongside two additional A Levels.

## What qualifications do I need?

You do not necessarily need to have completed the Sports Studies course at Year 11 although this is desirable. Besides the overall entry requirements to enter the Sixth Form, you must be prepared to complete regular practical lessons such as climbing, hill walking, mountain biking and kayaking. The ability to adhere to coursework deadlines and work independently to complete written assessments is vital.

## What does the course involve?

Practical activities and expedition visits form a substantial portion of the course, with classroom based theory lessons and written assessments to be completed throughout. Units covered range from expedition experience, to health, well being and sport. There are six units to complete in total. The course does incur some additional costs to students, which they should be prepared for. Most notably the winter mountaineering expedition to Scotland usually costs around £300. Depending on the make-up of the group, additional residential and day visits may be arranged at cost. For example a visit to Snowdonia to look at facilities and operations in the outdoor industry. We do have an extensive collection of equipment in our stores so students don't need anything specialist in terms of kit and equipment.

## Where could this course take me?

Typically students who complete this course enter careers in the Outdoor Adventure industry; from managing centres to leading activities such as climbing, mountain biking or kayaking. This course also provides a pathway to university courses in sport and active leisure.

How will my work be assessed?	Sport and Outdoor Education BTEC Level 3 National Foundation Diploma in Sport and Outdoor Activities
You will study six units for which most of the work is assessed via coursework. Practical assessments also make up some units. Practically you will complete climbing, hill walking, surfing, mountain biking, canoeing and kayaking.	
Specification Details	Pearson BTEC Level 3 National Foundation Diploma in Sport and Outdoor Activities. The link to the specification is below: <a href="https://qualifications.pearson.com/en/qualifications/btec-nationals/sport-and-outdoor-activities-2019.html">https://qualifications.pearson.com/en/qualifications/btec-nationals/sport-and-outdoor-activities-2019.html</a>

# BTEC Level 3 National Diploma in Sport and Outdoor Activities

## Is this course for me?

Do you enjoy the great outdoors and taking advantage of this beautiful county and country of ours? Do you enjoy the thought of regular practical lessons and completing a one week residential in the Scottish Highlands? If the answer to these questions is yes, this course is for you. This course is equivalent to two A Levels.

## What qualifications do I need?

You do not necessarily need to have completed the Sports Studies course at Year 11 although this is desirable. Besides the overall entry requirements to enter the Sixth Form, you must be prepared to complete regular practical lessons such as climbing, hill walking, mountain biking and kayaking. The ability to adhere to coursework deadlines and work independently to complete written assessments is vital.

## What does the course involve?

Practical activities and expedition visits form a substantial portion of the course, with classroom based theory lessons and written assessments to be completed throughout. Units covered range from expedition experience, to health, wellbeing and sport. There are seven units to complete in total. The course does incur some additional costs to students, which they should be prepared for. Most notably the winter mountaineering expedition to Scotland usually costs around £300. Depending on the make-up of the group, additional residential and day visits may be arranged at cost. For example a visit to Snowdonia to look at facilities and operations in the outdoor industry. We do have an extensive collection of equipment in our stores so students don't need anything specialist in terms of kit and equipment.

## Where could this course take me?

Typically students who complete this course enter careers in the Outdoor Adventure industry; from managing centres to leading activities such as climbing, mountain biking or kayaking. This course also provides a pathway to university courses in sport and active leisure.

How will my work be assessed?	Sport and Outdoor Education BTEC Level 3 National Diploma in Sport and Outdoor Activities
You will study seven units which are assessed through either written or practical coursework. Your practical performance in outdoor activities such as climbing, mountainbiking, mountaineering and paddle sports, will be assessed. There is no written exam.	
Specification Details	Pearson BTEC Level 3 National Foundation Diploma in Sport and Outdoor Activities. The link to the specification is below: <a href="https://qualifications.pearson.com/en/qualifications/btec-nationals/sport-and-outdoor-activities-2019.html">https://qualifications.pearson.com/en/qualifications/btec-nationals/sport-and-outdoor-activities-2019.html</a>



# Outdoor Activities

## Is this course for me?

Are you so passionate about the great outdoors that you wish to study this full time course, which is equivalent to three A Levels? Do you enjoy the great outdoors and taking advantage of this beautiful county and country of ours? Do you enjoy the thought of regular practical lessons and completing a one-week residential in the Scottish Highlands? If the answer to these questions is yes, this course is for you.

## What qualifications do I need?

You do not necessarily need to have completed the Sports Studies course at Year 11 although this is desirable. Besides the overall entry requirements to enter the Sixth Form, you must be prepared to complete regular practical lessons such as climbing, hill walking, mountain biking and kayaking. The ability to adhere to coursework deadlines and work independently to complete written assessments is vital.

## What does the course involve?

Practical activities and expedition visits form a substantial portion of the course, with classroom based theory lessons and written assessments to be completed throughout. Units covered range from expedition experience, to health, wellbeing and sport. There are twelve units to complete in total. The course does incur some additional costs to students which they should be prepared for. Most notably the winter mountaineering expedition to Scotland usually costs around £300. A smaller visit to Snowdonia would also be required, as well as further day visits (examples may include white-water paddling on the River Dart, or visiting and testing facilities such as The Wave in Bristol). We do have an extensive collection of equipment in our stores so students don't need anything specialist in terms of kit and equipment, but the basics like waterproof outerwear and sturdy hiking boots would be useful.

## Where could this course take me?

Typically students who complete this course enter careers in the Outdoor Adventure industry; from managing centres to leading activities such as climbing, mountain biking or kayaking. This course also provides a pathway to university courses in sport and active leisure.

## How will my work be assessed?

You will study 12 units which are assessed through either written or practical coursework. Your practical performance in outdoor activities such as climbing, mountain biking, mountaineering and paddle sports, will be assessed. There is no written exam.

## Sport and Outdoor Education BTEC Level 3 National **Extended** Diploma in Sport and Outdoor Activities

Specification Details

Pearson BTEC Level 3 National Foundation Diploma in Sport and Outdoor Activities. The link to the specification is below:  
<https://qualifications.pearson.com/en/qualifications/btec-nationals/sport-and-outdoor-activities-2019.html>





**Western Road  
Crediton  
Devon  
EX17 3LU**

01363 778364

[www.qe.devon.sch.uk/sixth-form](http://www.qe.devon.sch.uk/sixth-form)

[sixthformoffice@qe.devon.sch.uk](mailto:sixthformoffice@qe.devon.sch.uk)

@qecrediton · @qesixthform

